



# **WORKSOP POST 16 CENTRE EXPANSION PROJECT**

Consultation process from 10th January to 21st February 2022

This is the formal consultation document for the proposed expansion of Worksop Post 16 Centre capacity from 400 to 540 and associated increase in PAN in September 2023

**Workshop Post 16 Expansion Project**  
**Consultation over the physical expansion of the Centre and Change of Published Admission Number**

**Overview**

Workshop Post 16 would like to increase the physical capacity of the Centre from 400 to 540, commencing in 2023 and starting with Year 12 admitting 270 rather than 200.

Because this is considered to be a “significant expansion” we must consult in line with guidance from the Department for Education. This is the consultation document.

**An introduction from the Head of Centre, Janette Shea**

Exciting plans have been developed to invest significant capital money to support the expansion of Workshop Post 16 Centre so that it can meet the anticipated increase in the number of students in the town wanting to access A Level provision. Following careful scrutiny and planning, the Trust identified the need to increase the number of post 16 places following the significantly improved GCSE outcomes, meaning a greater number of children wish to progress to study A Level. We consider this a fantastic opportunity for the Centre.

However, we also want to make sure that as part of any expansion we keep all our stakeholders fully informed, giving them the appropriate opportunities to consult and feedback their views.

For the sake of clarity, this consultation document addresses the increase in the physical capacity of the Centre to accommodate 540 students across years 12 and 13 in 2023. This includes a change of published admission number from 400 across combined years 12 and 13 to 540 i.e. from 200 year year group to 270.

In the light of the proposed increase to our numbers, we must, as an academy, follow the guidance published by The Department for Education in “Making significant changes to an open academy and closure by mutual agreement. Departmental guidance for all types of academy trust. Published November 2019.” A copy of this can be found here:

[https://assets.publishing.service.gov.uk/government/uploads/system/uploads/attachment\\_data/file/847451/Significant\\_change\\_and\\_academy\\_closure\\_151119.pdf](https://assets.publishing.service.gov.uk/government/uploads/system/uploads/attachment_data/file/847451/Significant_change_and_academy_closure_151119.pdf)

The most relevant section relates to any proposed changes detailed in “Expansion of physical capacity” where it says:

*“A ‘significant expansion’ is defined as an enlargement that increases the overall physical capacity of an academy (as recorded in its funding agreement) so that it can increase its overall teaching space enabling the school to provide places for more than 30 additional pupils.....Permanently changing the internal configuration of a school building to accommodate more than 30 additional pupils would also be classed as an ‘increase in capacity’ and requires the significant change process to be followed.”*

To comply with the significant change process, we must “*demonstrate that a fair and open local consultation has been undertaken with all those who could be affected by the proposed change, and that the academy trust has considered all responses received. Comments or objections can be made on any grounds and opportunities for feedback should be given at all public and stakeholder meetings. The LA will hold important contextual information on the requirement for places locally and must be consulted in all cases.*”

Details of how you can feedback comments or objections are contained later in this document.

### **The Planning Application process**

The Trust has applied for and been granted planning approval for the extension of the Centre, following Bassetlaw District Council’s planning process. Planning application 19/D1401/FUL was granted on 10 February 2020 with the following conditions:

1. The development must be begun not later than the expiration of three years beginning with the date of this permission.

Reason: To comply with Section 51 of the Planning and Compulsory Purchase Act 2004.

2. The development hereby permitted shall be in accordance with details and specifications included on the submitted application form and shown on the following approved plans:

Drawing P1028 No. 11 Revision 03 received on 25 October 2019

Drawing P1028 No. 13 Revision 02 received on 25 October 2019

Drawing P1028 No. 10 Revision 01 received on 28 January 2020.

Reason: To ensure the development takes the agreed form envisaged by the Local Planning Authority when determining the application and for the avoidance of doubt.

3. The facing and roofing materials to be used in the development hereby permitted shall match those used in the construction of the existing building, unless otherwise agreed in writing with the Local Planning Authority.

Reason: To ensure the satisfactory appearance of the completed development.

4. The extension hereby permitted shall not be brought into use until:

- 15 additional car parking spaces have been provided in accordance with amended plan reference P1028/10/Rev01. These parking spaces shall be hard surfaced and delineated on site and shall be retained for parking purposes for the lifetime of the associated development.

- The existing metal gates located at the Valley Road end of the area marked 'current cycle lanes to become parking area' on the approved plan have been welded closed. These gates shall remain permanently closed for the lifetime of the associated development, unless otherwise agreed in writing with the Local Planning Authority.

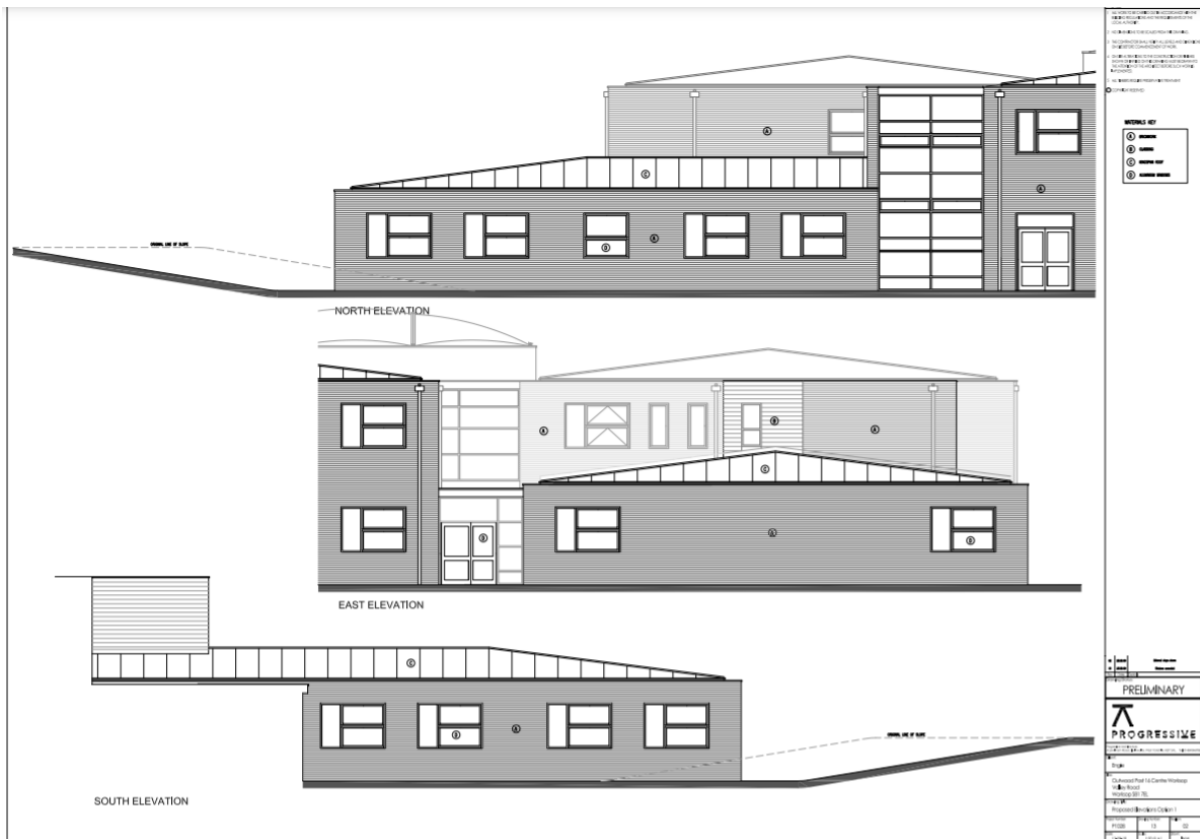
Reason: In the interest of highway safety and in order to provide additional car parking within the site.

5. Before any construction occurs above damp proof course (DPC) level, a scheme for tree planting/re-planting shall be submitted to and agreed in writing with the Local Planning Authority. The agreed scheme shall be fully implemented within nine months of the date when the building hereby permitted is first occupied. Any trees or shrubs removed, dying, being severely damaged or becoming seriously diseased within five years of planting shall be replaced by trees or shrubs of a size and species similar to those originally required to be planted.

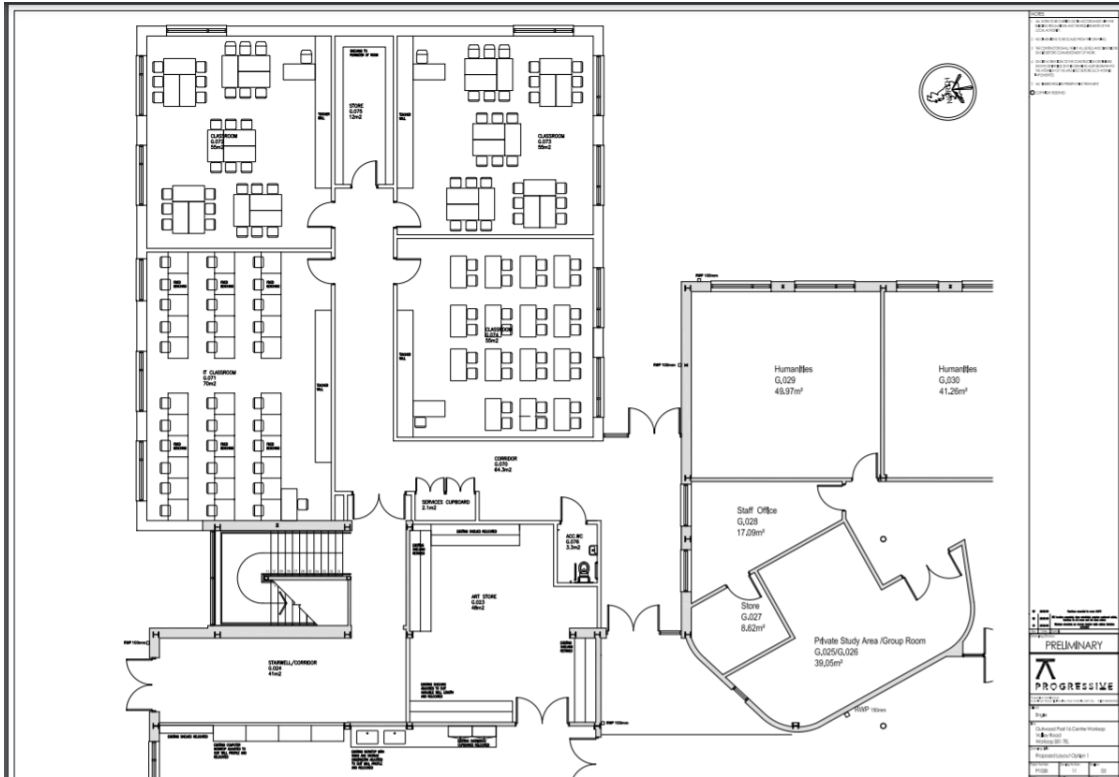
Reason: To ensure the satisfactory overall appearance of the completed development and to help assimilate the new development into its surroundings.

The relevant drawings referred to in the application are provided here and show the external elevation of a single storey extension to the rear of the Centre and the internal layout of the extension that provides four additional teaching rooms:

Picture 1 - external elevation:



Picture 2 - Internal layout of the extension



Picture 3 - Full site plan with 15 extra car parking spaces added on the driveway



The Centre's context

Worksop Post 16 Centre provides a combined 16-19 academies post 16 facility for the two schools within Worksop, Outwood Academy Portland and Outwood Academy Valley.

The Post 16 Centre was built as part of the Bassetlaw PFI along with Outwood Academy Portland and Outwood Academy Valley. However, as each of the two academies have seen significant improvements in the academic attainment of children, we have seen increased applications to the Post 16 Centre.

The Post 16 Centre was recently graded as 'Outstanding' in both the last inspections of Outwood Academy Portland and Outwood Academy Valley Ofsted's which has supported the trend of increased applications.

### **Why is there a need for more Post 16 places?**

The Post 16 Centre's published admission number across a combined year 12 and 13 is 400. Demand for places at the Centre has increased for the last two years as follows and, as Portland and Valley both fill in each year group to 300, we will expect to see this increase further:

In September 2020 applications were as follows:

Year 12 242

Year 13 206

Total 448

In September 2021 applicant numbers were as follows:

Year 12 300

Year 13 242

Total 542

### **The expansion proposal**

If the proposal goes ahead, 140 additional places will be available in the Post 16 Centre from September 2023. This means that construction will have to take place to enlarge the Centre ready for September 2023 if not before. This construction will create four more teaching spaces in addition to some internal remodelling that has already been completed. We will eventually receive additional funding for the increase in pupils to allow for extra teachers and the resources and equipment needed to accommodate this increase.

### **The broad educational implications**

The first thing to acknowledge is that ultimately the number of students in each year group will increase. Therefore, we will increase the number of staff in the Centre proportionately to ensure that class sizes remain within reasonable limits for teaching A-Level subjects to a high standard.

### **How will you manage the increase in numbers?**

As a dedicated Post 16 Centre we are used to managing large numbers of 16-19 year olds on site. On site there is a headteacher and a fixed administrative and support team including a dedicated catering provision, alongside flexible teaching and leadership from the two schools in the town. Therefore, the site works as a fully operational school in its own right.

As the number of students increases so will our revenue. We will therefore ensure that this increased revenue is spent proportionately and in line with national benchmarks.

**Will the increase in numbers affect the level of pastoral care available?**

We are confident that we will retain the high quality of pastoral care we currently have. We will retain the current Learning Manager structure and pastoral support structures. We will also continue to review the level of pastoral support as the number on roll grows.

**Will the increase in numbers affect the level of support for students with SEND?**

We see no reason why any increase in numbers should impact upon the provision for students with SEND. As the Centre grows in all aspects there will be a proportionate increase in terms of the funding we receive and therefore where we spend it. We will therefore grow any additional support in line with our current provision whilst ensuring it is appropriately benchmarked against national guidance.

**Will you be changing the admission criteria when you expand?**

There are no plans to change our current admissions criteria. However, because we will be expanding our PAN from 2023 there is a statutory requirement to consult with stakeholders. This process is a formal consultation that must take place between November 2021 and February 2022.

**Managing the expansion project**

Outwood Grange Academies Trust (OGAT) Trustees have ultimate oversight of this expansion project.

**Who is paying for the expansion project?**

OGAT will be funding this expansion project in full from money they have saved specifically to invest in capital projects.

**Will there be an impact on the learning of students during the building works?**

Any impact will be kept to a minimum with as much work as possible being completed over holiday periods. However, we will be assigning a senior colleague to oversee this process to ensure that learning is not interrupted even if there have to be, at times, room changes to facilitate building works.

**Feeding back your views**

Your views can be registered through our online consultation form which is available here <https://www.post16worksop.outwood.com>

We will regularly monitor this and provide interim feedback where appropriate.

If you prefer to write directly to the school please direct any questions or queries to Janette Shea, Head of Centre, Worksop Post 16, Valley Road, Worksop, S81 7EL by the closing date of 8th September 2021. Please mark any correspondence with the heading Worksop P16 Expansion Project or Admission Consultation. Likewise, if you prefer to email the school, please do so to the following address: [j.shea@p16worksop@outwood.com](mailto:j.shea@p16worksop@outwood.com).

### **Concluding the consultation**

When the consultation is concluded, the Regional Schools Commissioner (RSC) will reach a conclusion on approving the expansion of the Centre as long as we demonstrate that:

- a fair and open consultation has taken place.
- the proposed changes are aligned with local pupil place plans
- any change is unlikely to have a negative impact on educational standards at the academy or at other local schools or colleges
- appropriate planning permissions and other consents required have been secured
- the proposal does not displace existing pupils

The RSC will then consider a range of factors and make a balanced judgement when deciding whether to approve or reject a proposal. They may also decide to refer that matter to the Secretary of State for a decision.

The Trust Board will consider the consultation to the change of PAN and decide whether it is content amend the Centre's Admission Policy to reflect this.